

WESTERN SYDNEY CONFERENCE CENTRE FACILITIES GUIDE



WESTERN
SYDNEY
CONFERENCE
CENTRE

**WELCOME
TO THE
WESTERN
SYDNEY
CONFERENCE
CENTRE**

**THE WEST IS TAKING
CENTRE STAGE**

The Western Sydney Conference Centre (WSCC) is an innovative state-of-the-art venue that delivers limitless possibilities.

Designed to create the most memorable experiences, this amazing destination is home to a multi-functional conference centre, the premium Pullman Sydney Penrith, decadent dining experiences and more. Ideally located in the heart of Penrith, Western Sydney Conference Centre sits within a region that has evolved as an aspirational business and lifestyle hub.

Exuding dynamism, transformation and innovation, this world-class venue embraces originality through flexibility and showcases Western Sydney as a vibrant lifestyle destination deserving of global recognition.



WESTERN SYDNEY CONFERENCE CENTRE FEATURES



1,250sqm of adaptable floor space



The opportunity to incorporate natural light in the venue



Capacity to host up to 1,000 seated guests in a variety of floorplans



Pre-Event Space connecting to outdoor terraces and landscaped gardens



Direct access to Pullman Sydney Penrith



Bespoke Menus and Interactive Culinary Experiences



Innovative audio visual capabilities with onsite professional support



Vehicle access for indoor displays



Dedicated loading dock



Ample undercover parking



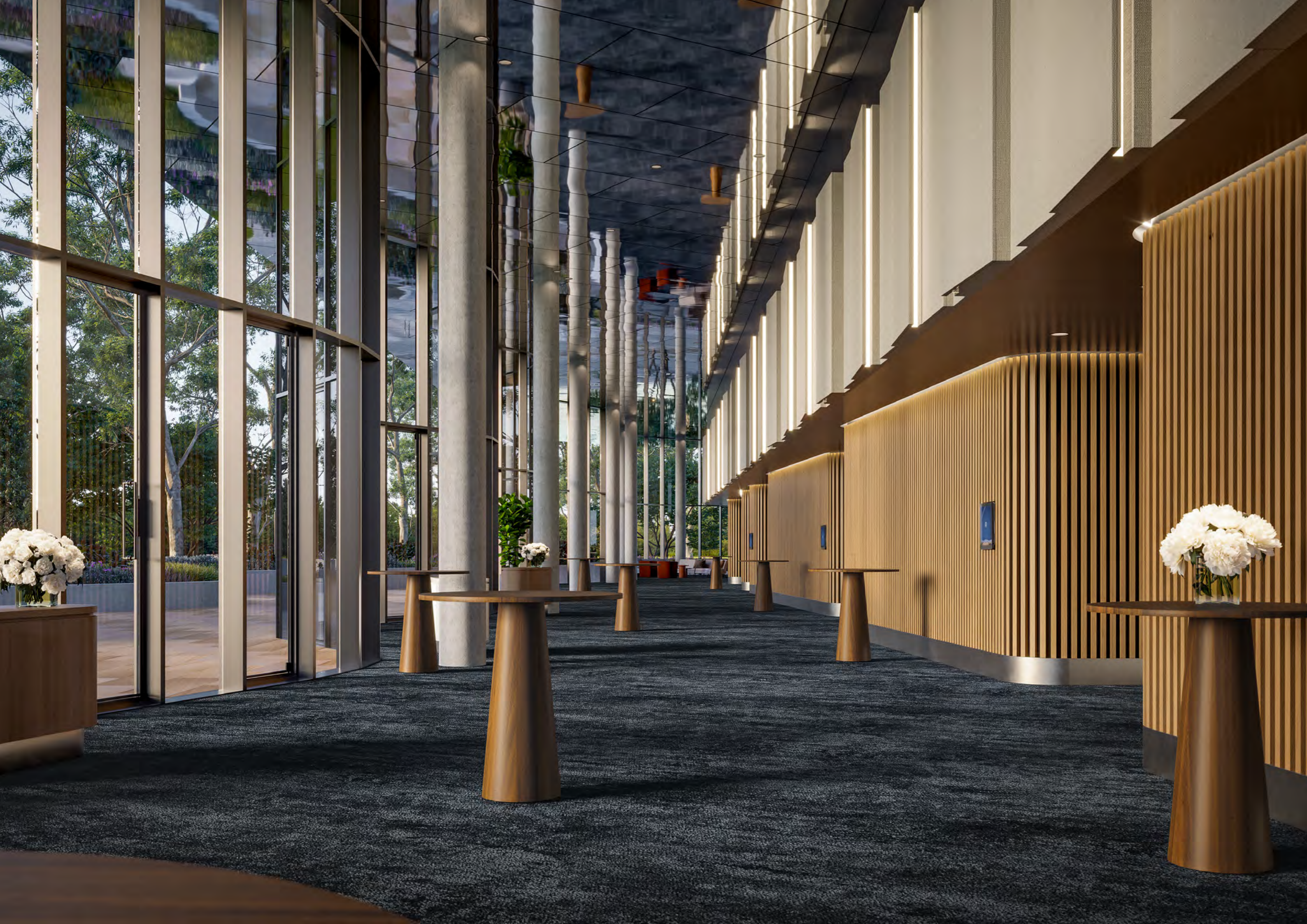
ONE DESTINATION LIMITLESS POSSIBILITIES

The Western Sydney Conference Centre precinct showcases a myriad of indulgent offerings that complete any event experience. WSCC is home to Penrith's first international five-star hotel, Pullman Sydney Penrith.

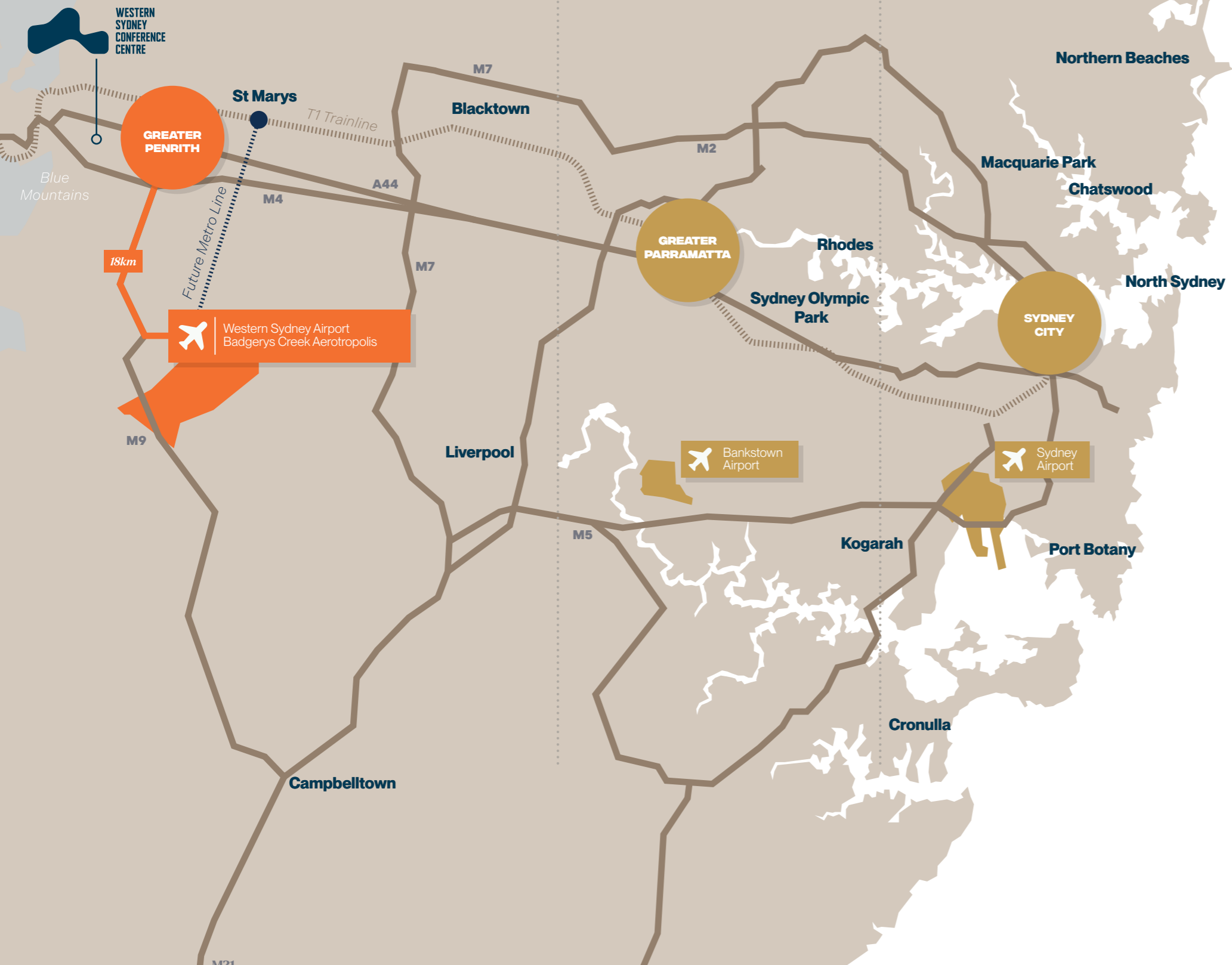
The upscale hotel boasts 153 premium accommodation rooms including spacious suites, an elite fitness centre, sauna, in-room dining and access to the region's best dining, entertainment and recreation activities.

This landscape address is home to two exclusive culinary establishments which are already gaining keen interest from connoisseurs throughout the region and beyond. Conducted by Executive Chef Colin Chun, the elegant Marcel Bar & Bistro showcases a locally inspired Modern European Cuisine along with an intimate cocktail and wine lounge with carefully curated beverage lists. For a more relaxed atmosphere, Tori Bar & Café serves some of the best locally-sourced single origin coffee as well as beautifully prepared pastries and light meals.





EXPERIENCE PENRITH



Western Sydney Conference Centre is located less than an hour from the Sydney CBD and Airport at the gateway of the World-Heritage listed Blue Mountains. This is where innovation interweaves with nature to establish the opportunity for unique experiences. WSCC introduces an elevated calibre of sophistication to a region that is already highlighted by world-class amenities.

Penrith is easily accessible from both the Sydney City and Parramatta business precincts via major arterial roads and public transport. With its close proximity to the upcoming Western Sydney International Airport, WSCC will usher in a new era of sophistication, technological advancements and enhanced flexibility, not only for the Western Sydney region, but also for the broader events community.





THE CULINARY COMPASS POINTS WEST

Western Sydney Conference Centre presents a uniquely diverse and captivating gastronomical landscape to Penrith and the wider Western Sydney region.

Our kitchen team is passionate about revealing the most inspiring ways to transform the region's best ingredients into breath-taking masterpieces. With a focus on sourcing fresh and local produce, our team take great pride in creating a range of dining experiences to best suit your event. Experiences include, but are not limited to themed menus, food and wine pairings, wellness dining and interactive displays.

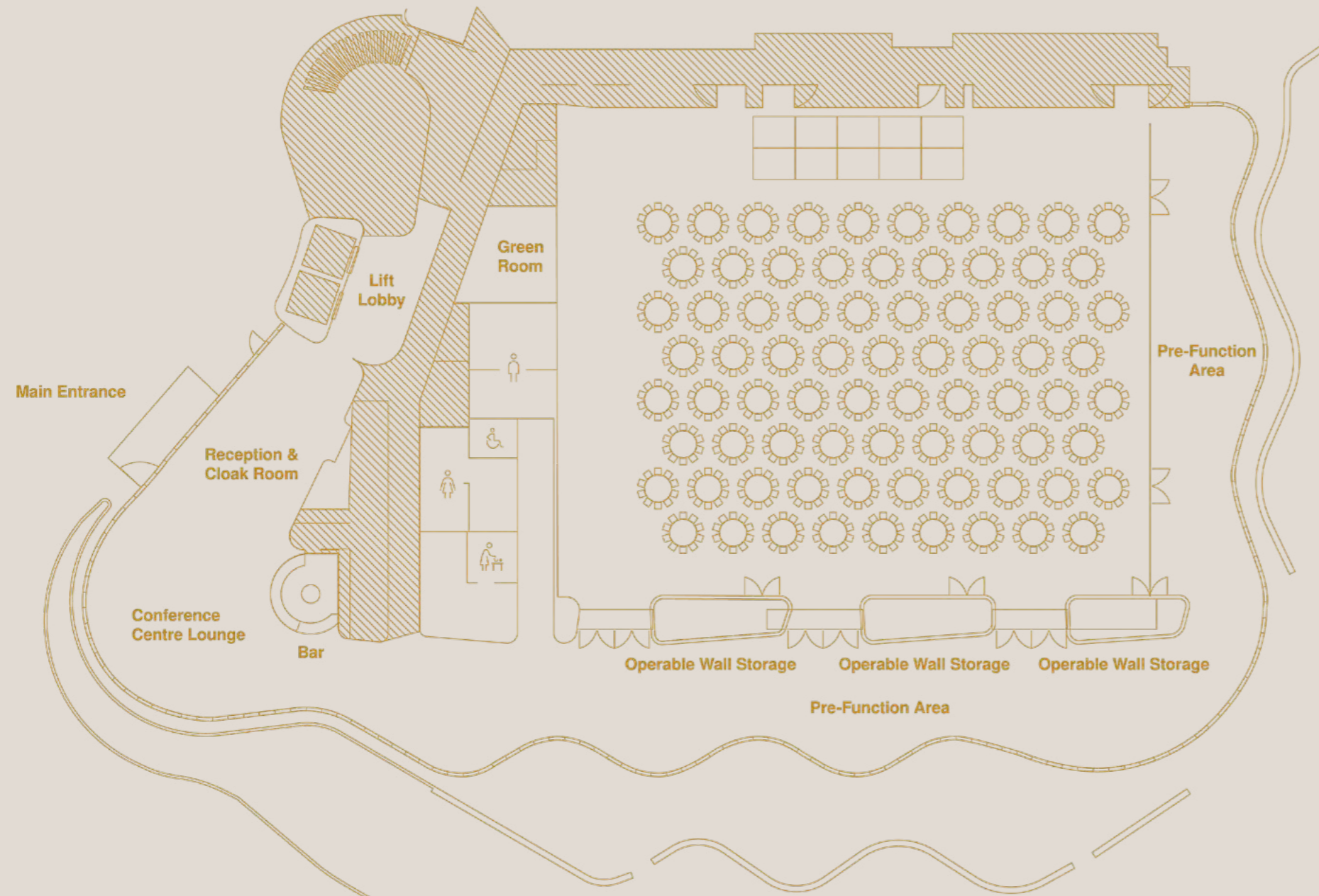
Our extensive and flexible catering options include:

- Feasting sharing menus
- Marcel Bar & Bistro inspired plated menus - two, three or four courses
- Canapés and cocktails
- Interactive food stations



FLOORPLANS

WSCC ROOM (FULL)

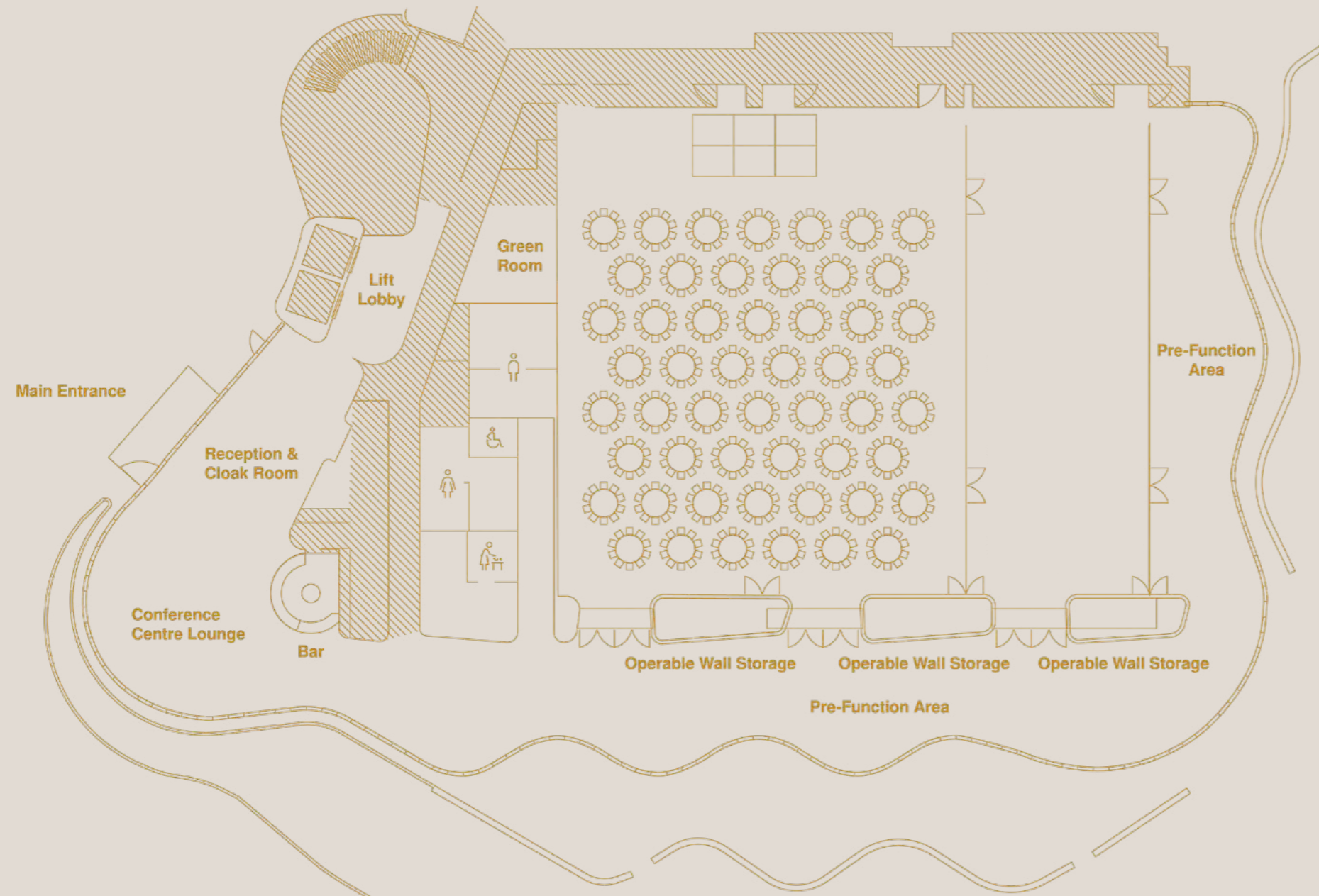


AREA (M ²)	1,250
THEATRE	1,000
CLASSROOM	700
COCKTAILS	1,000
BANQUET	1,000
EXHIBITION	80
BOARDROOM	-
U-SHAPE	-



FLOORPLANS

WSCC ROOM (1 & 2)

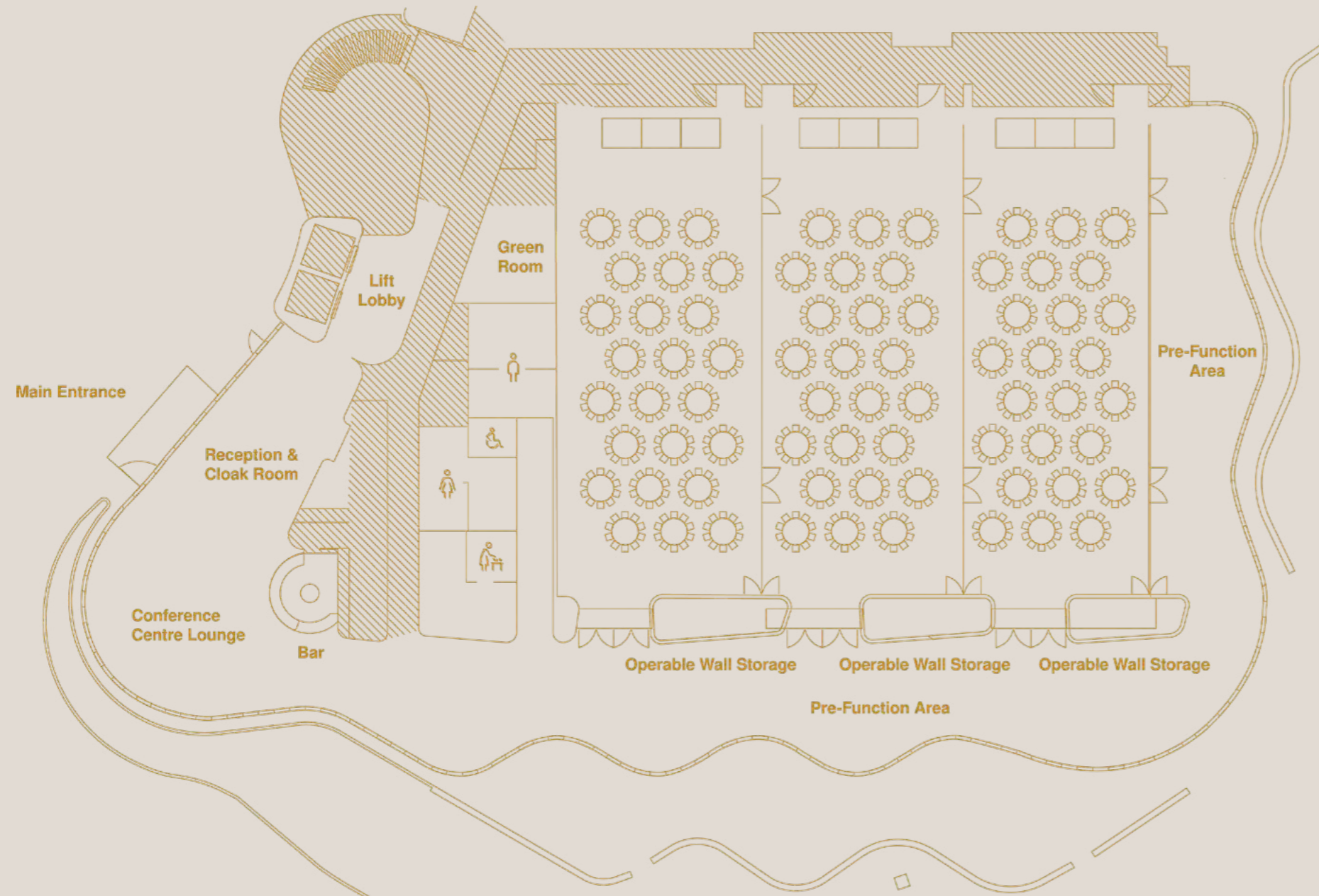


AREA (M ²)	832
THEATRE	660
CLASSROOM	320
COCKTAILS	700
BANQUET	660
EXHIBITION	52
BOARDROOM	-
U-SHAPE	-



FLOORPLANS

WSCC ROOM (1, 2 or 3)

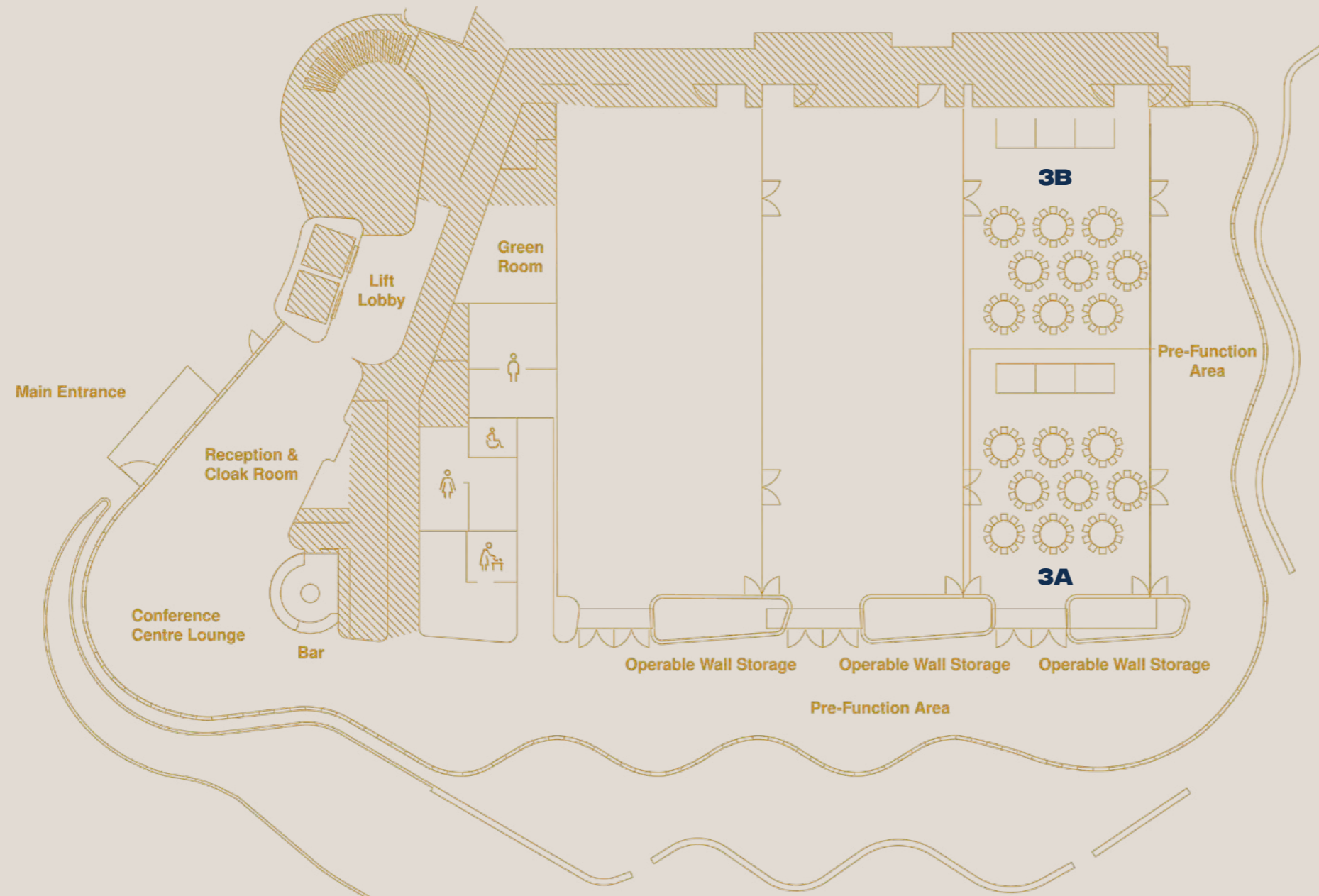


AREA (M ²)	416
THEATRE	330
CLASSROOM	160
COCKTAILS	350
BANQUET	330
EXHIBITION	26
BOARDROOM	-
U-SHAPE	-



FLOORPLANS

WSCC ROOM (3A or 3B)



AREA (M ²)	209
THEATRE	200
CLASSROOM	80
COCKTAILS	175
BANQUET	165
EXHIBITION	13
BOARDROOM	40
U-SHAPE	50









pullman
HOTELS

pullman
HOTELS

**WONDER
COMES
WEST**



**WESTERN
SYDNEY
CONFERENCE
CENTRE**